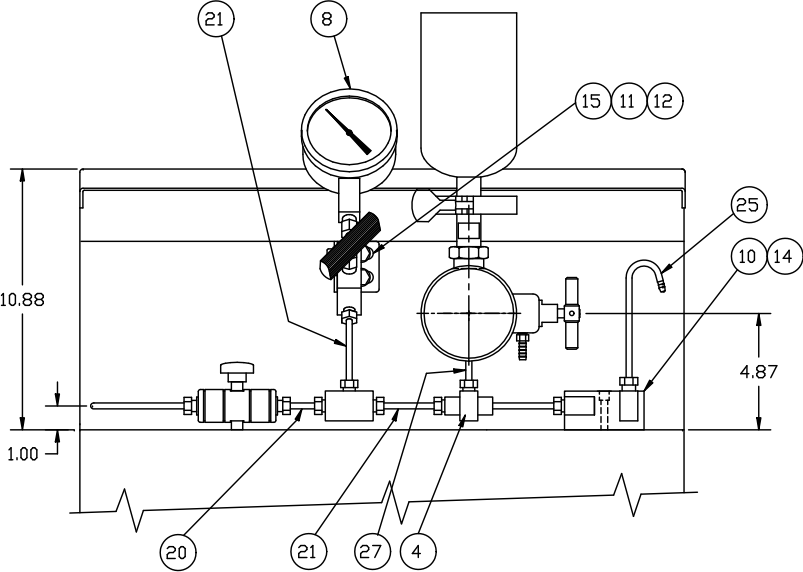
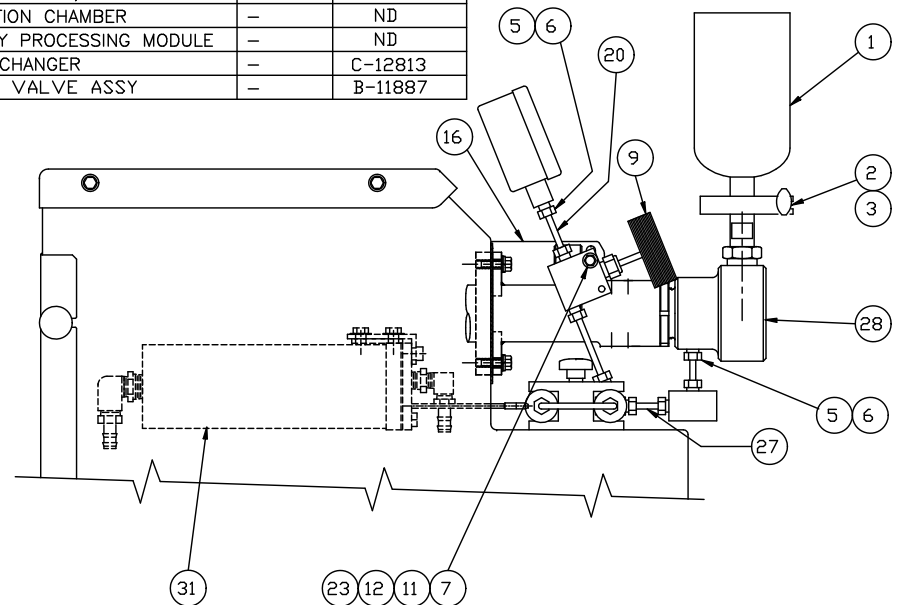
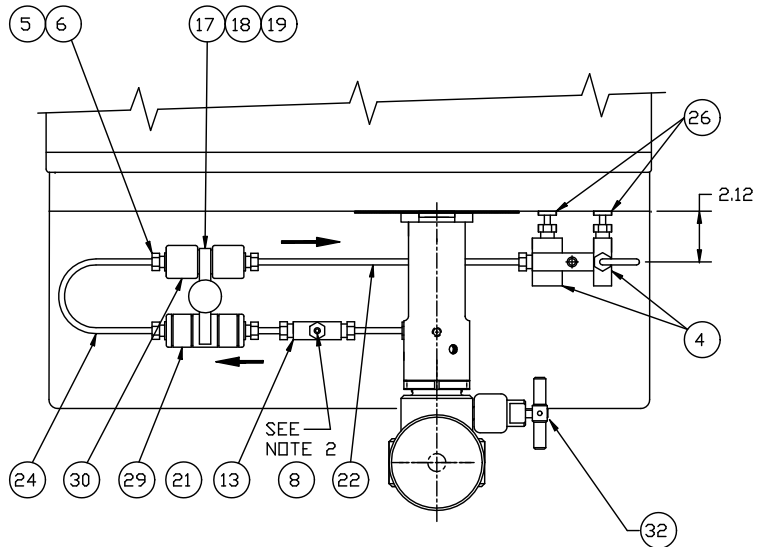


ITEM	QTY	INV. NO.	DESCRIPTION	MATERIAL	DRAWING NO.
1	1	14.0200	RESERVOIR, 1 LITER	316L SS	A-10205
2	1	24.3400	CLAMP, 1" TRI-CLAMP	SS	ND
3	1	16.1400	GASKET, 1" TRI-CLAMP	VITON	ND
4	4	15.2300	ELBDW, 1/4 HP	316 SS	ND
5	6	15.2000	1/4 GLAND HP	316 SS	ND
6	6	15.2100	1/4 COLLAR HP	316 SS	ND
7	1	99.0081	HEX NUT .25-20	SS	ND
8	1	1.3700	PRESSURE GAUGE, 0-35,000 PSI	-	ND
9	1	15.2505	NEEDLE VALVE, TWO WAY	-	ND
10	1	14.5416	BRACKET COOLER PIPING	304 SS	B-12836
11	3	99.0108	LOCK WASHER .25	SS	ND
12	4	99.0097	FLAT WASHER .25	SS	ND
13	1	15.2400	TEE, 1/4 HP	316 SS	ND
14	1	99.0125	SHCS .25-20 X 1.75 LG	SS	ND
15	2	99.0026	HHCS .25-20 X .75	SS	ND
16	1	10.6011	BRACKET, FOR VALVE	304 SS	A-11599
17	1	14.8027	CHAMBER HOLDER	304 SS	B-12796
18	1	14.8030	KNDB	-	ND
19	1	99.0071	ROD .25-20 X 3 LG.	SS	ND
20	2	15.3100	NIPPLE, 1/4 HP X 3" LONG	316 SS	ND
21	2	15.3200	NIPPLE, 1/4 HP X 4" LONG	316 SS	ND
22	1	15.3850	NIPPLE, 1/4 HP X 13.0" LONG	316 SS	ND
23	1	99.0030	HHCS .25-20 X 1.5	SS	ND
24	1	15.4311	NIPPLE .25 HP X 10 BEND	316 SS	A-11280
25	1	16.0001	OUTLET TUBING, GOOSENECK	316 SS	A-11538
26	2	66.4311	BUSHING SNAP .44 OD X .31 ID	-	ND
27	2	15.3000	NIPPLE 1/4 HP X 2.75" LG.	316 SS	ND

REFERENCE PARTS ONLY				
28	1	801.13345	PUMP ASSEMBLY, M110EH	- C-13345
29	1	-	INTERACTION CHAMBER	- ND
30	1	-	AUXILIARY PROCESSING MODULE	- ND
31	1	801.12813	HEAT EXCHANGER	- C-12813
32	1	801.11887	PRIMING VALVE ASSY	- B-11887

REV	ZN	ECN NO.	DESCRIPTION	BY	DATE
A	-	-	ITEM 20 & 27 QTY CHANGE	WPS	2-26-02
B	-	03-9	ITEM 24 WAS 15.3701	WPS	2-6-03



NOTES:
 1. SOME ITEMS SHOWN MAY NOT BE SUPPLIED AS STANDARD.
 2. PRESSURE GAUGE ASS'Y IS NOT SHOWN IN THIS VIEW.

ASSY. NO. 801.13368

DUPLICATION OR DISSEMINATION WITHOUT AUTHORIZATION PROHIBITED
 CONFIDENTIAL AND PROPRIETARY PROPERTY OF:

Microfluidics 30 OSSISPEE RD.
 P.O. BOX 9101
 NEWTON, MA 02464-9101 USA

SCALE: 1/4	TOLERANCES: $\angle = \pm 1/2$	XX = $\pm 1/32$	DRAWN BY MC
DATE: 1-10-02	.XX = $\pm .01$.XXX = $\pm .005$	F. N. 13368B

PROCESS PIPING, M110EH2002

MATERIAL:	DRAWING NUMBER	REV.
	C-13368	B